

A white ceramic urn with a gold band, resting on a draped white fabric. The urn has a fluted body, a pedestal base, and a lid with a small finial. A wide, horizontal gold band encircles the middle of the urn. The background is a soft, draped white fabric with subtle folds and highlights.

*florentina*  
CURTAIN POLES

*Made in the United Kingdom*



Javelin Matt White



Javelin Light Oak



Javelin Medium Oak



Jester Pearlised Cream



Jester Matt White



Bobbin Medium Oak



Bobbin Light Oak



Bobbin Matt White

28mm



Dome Holdback Light Oak



Antique Pine Fluted Ball



Antique Pine Plain Ball



Antique Pine Acorn

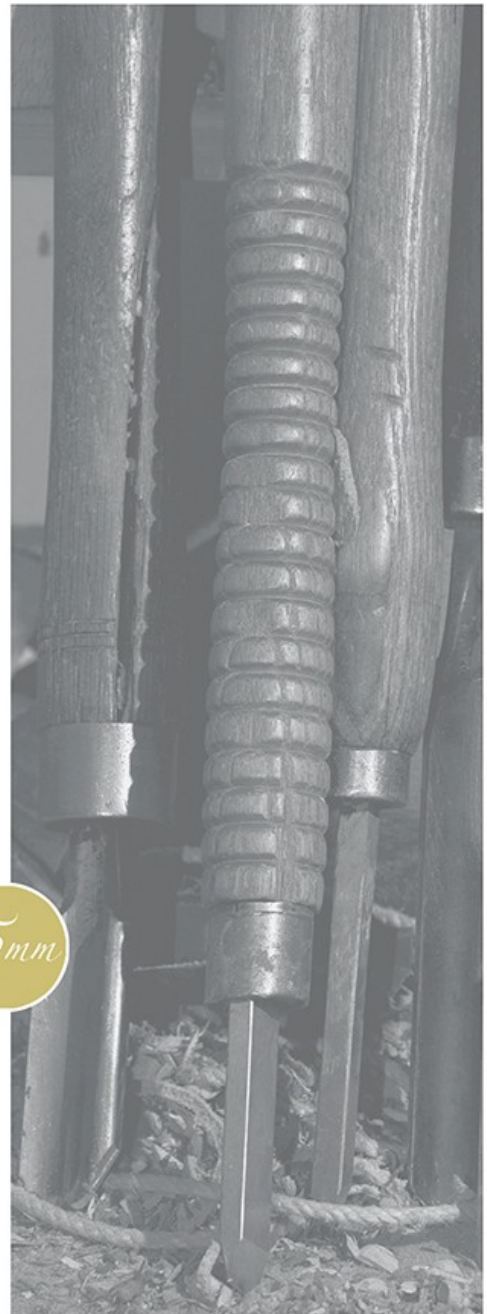
35mm



Crowned Ball Antique Silver  
with Solid Bronze Inlay



Crowned Ball Antique White  
with Solid Bronze Inlay



Antique Gilt



Medium Oak



Fluted Ball Antique White



Fluted Ball Antique Gilt



- 1 Pearlised Cream
- 2 Antique Silver
- 3 Pale Ash



Beehive Rubbed Red Gold

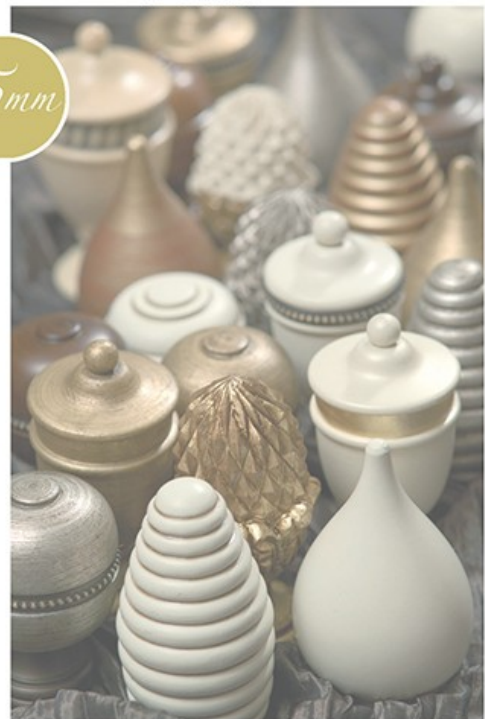


Beehive Antique Silver

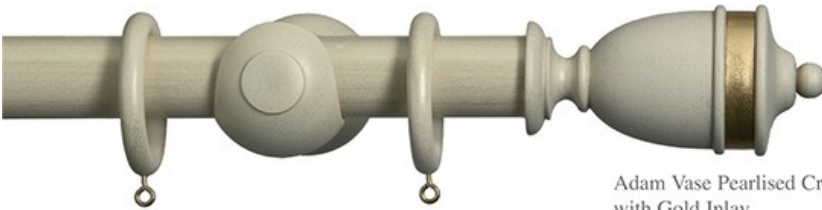


Beehive Antique White

35mm



Dome Holdback Matt White



Adam Vase Pearlised Cream  
with Gold Inlay

35mm



Adam Vase Antique Gilt

Antique Silver



Adam Vase Pale Ash  
with Marquetry Inlay

45mm



Antique White



Adam Vase Mahogany



Kremlin Antique Silver

35mm

Antique White



Kremlin Rubbed Red Gold



Antique Gilt



Hampstead Antique Cream  
with Gilt Detail

Rubbed Red/Gold



Hampstead Antique White

45mm

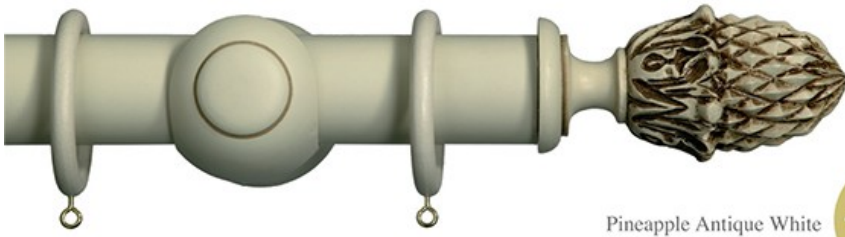


Antique Silver



Hampstead Antique Gilt





Pineapple Antique White

45mm



Pineapple Rubbed Red Gold



Pineapple Antique Cream  
and Gilt Details

35mm



Pineapple Antique Silver



Pineapple Antique Gilt





Plain Ball Pearlised Cream

45mm



Plain Ball Antique Gilt

Antique White



Antique Silver



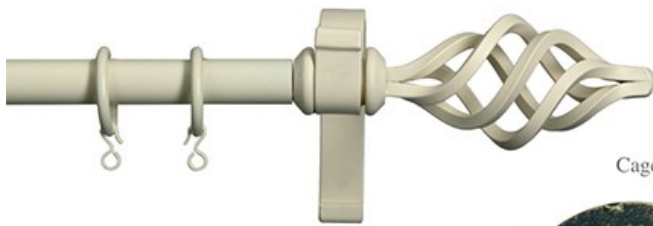
Plain Ball Cherrywood

35mm



Plain Ball Dark Oak





Cage Cream



Curl Black & Gold



Cage Bronze



Shaped Ball  
Cream



Shaped Ball  
Black & Gold



Oak & Pewter  
Cylinder



Cage Pewter



- 1 Cylinder Holdback, Oak Finish
- 2 Curl Holdback, Black & Gold
- 3 Cage Holdback, Pewter

19mm



## Wooden Holdbacks

### Classic Wooden Holdback

Available in Antique White, Antique Silver, Antique Gilt, Antique Cream with Gilt Details, Rubbed Red Gold, Pale Ash, Mahogany, Antique Pine, Pearlised Cream and Cherrywood.

1 Antique White  
(Actual size)



2 Antique Silver



3 Antique Gilt



4 Antique Cream with Gilt Details

5 Red Rubbed Gold

6 Antique Gilt  
(Actual size)



### Dome Wooden Holdback

Available in Antique Gilt, Antique Silver, Pale Ash, Matt White, Dark Oak, Light Oak and Pearlised Cream.

7 Antique Silver



8 Pale Ash



## Brackets Actual Size

### 28mm Bracket

Available in Pearlised Cream, Matt White, Medium Oak and Light Oak

### 35mm and 45mm Bracket

Available in Pearlised Cream, Matt White, Antique Cream, Antique Silver, Antique Gilt, Antique White, Antique Pine, Pale Ash, Rubbed Red Gold, Cherrywood and Mahogany



## Care Instructions

**Thank you for purchasing a Florentina product, manufactured in London using traditional methods and materials to create a classic range of replica Antique English Curtain Poles.**

Our Wood poles are made with natural timbers produced from managed forests. As natural woods are used and hand applied finishes are the hallmark of our unique curtain pole range, some slight variation of colour will occur across all the components. This is not a fault of the product, but part of its charm and uniqueness. We reserve the right to make some changes within the design or finish. This does not effect your statutory rights in any way.

Here are some care instructions and tips to keep your poles in pristine condition.

#### **Antique Gilt / Silver Finish**

This finish is achieved by applying metal leaf onto the poles and fittings. This leaf is then carefully smoothed out and a distressed look is created by adding a bitumen patina (Paint)

to the pole and fittings to highlight the contours of the pole and give it an antique look. Most of the processes undertaken to achieve this finish are handcrafted. This is the best way to create a proper gold colour without appearing too dull or greenish, as paint finishes often appear. Metal Leaf finished curtain poles only require dusting and should never be polished.

#### **Resin Finials**

The Pineapple finials we use are made from a wood based resin compound; this gives the weight and feel of wood and also behaves more like natural wood when applying Stains, Gilt Etc. Resin finials are not plastic and are consequently extremely fragile and if dropped will either shatter or be badly damaged. Do not put the double sided screw into the finial first, screw it into the pole and then turn the resin finial gently onto the screw on the pole, over tightening may cause the finial collar to break.

#### **Polished Finishes**

Because we use different woods for different parts of the pole, we have to use water based stains of different shades on

the different parts to try and get as good a match across the whole pole as possible, this is because various woods react to stains differently. Water based stains help bring out the grain of the wood and although they are more expensive we think the finished result is worth it. Polished finishes require regular dusting and the occasional use of a good quality wax based polish, however avoid using polish if these poles have Gilt or Silver details. Direct sunlight will cause a change in colour over a period of time.

#### **Antique White and Antique Cream Finishes**

These are produced by applying a patina on top of the paint finish to give the pole an aged look and to highlight the contours on the finials and brackets. Please note that we do not recommend the use of eyelet headings with these finishes as the paint finish will become badly marked with this type of heading.

**All Metal Poles** are Powder Coated and need little or no maintenance.



*florentina*

Manufactured and Distributed by

BYRON & BYRON

CREATORS OF HAND-CRAFTED CURTAIN POLES  
SINCE 1984

Byron & Byron Ltd  
Shaftesbury House,  
3 Shaftesbury Road  
London  
N18 1SW

Tel: +44 (0) 208 344 7979  
Fax: +44 (0) 208 344 7980  
[sales@byronandbyron.com](mailto:sales@byronandbyron.com)  
[www.byronandbyron.com](http://www.byronandbyron.com)

